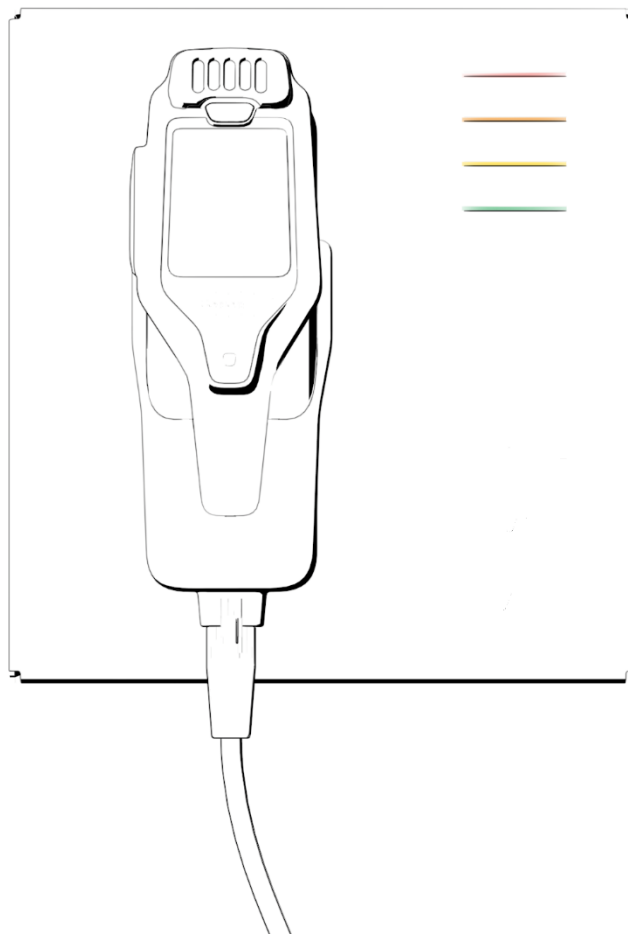
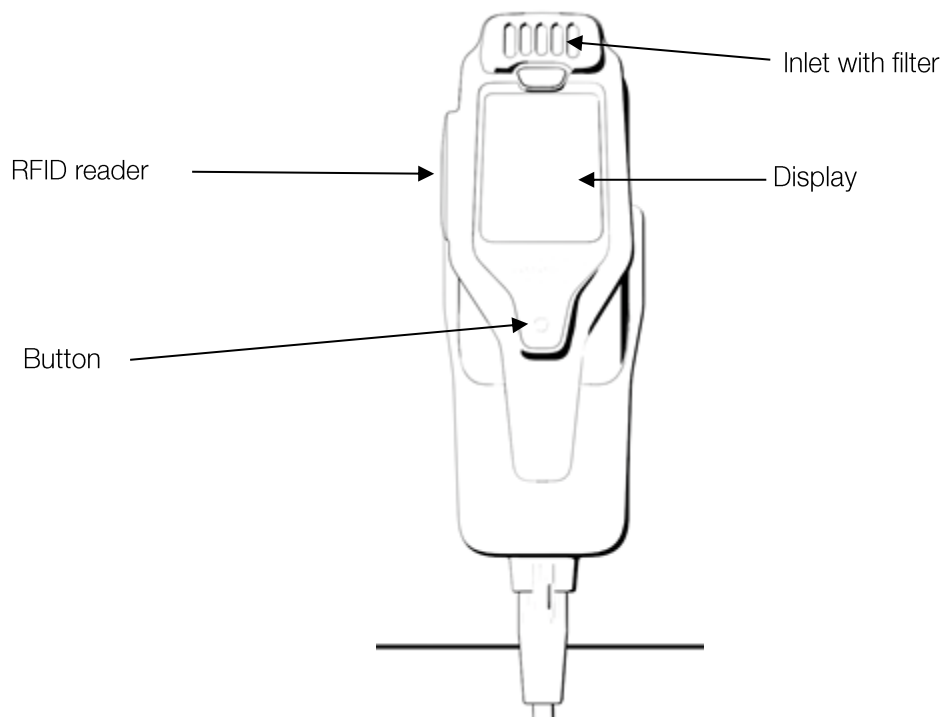


User Manual

Senseair Workplace



System overview



Senseair Workplace is an indoor¹ alcohol detector that accepts an exhaled breath sample and measures the concentration of alcohol, BrAC², in that exhaled breath sample³. The breath sample is provided without a mouthpiece. The Senseair Workplace is a calibration free device without limit on number of tests⁴.

Note 1: Details on restrictions on operating environment and storage environment are stipulated in PSP13995 Table 1: Key technical specification.

Note 2: BrAC: Breath Alcohol Concentration (mg/L): This is the primary means of expressing the breath alcohol concentration. The mass concentration of ethanol, expressed in mg/L (milligram of ethanol per litre breath air)

Note 3: Details on displayed results, measurement range, masking range, capacity, record keeping of measurements etc. are stipulated in document PSP13995 Table 1: Key technical specification and Table 2: Key technical specification configurations.

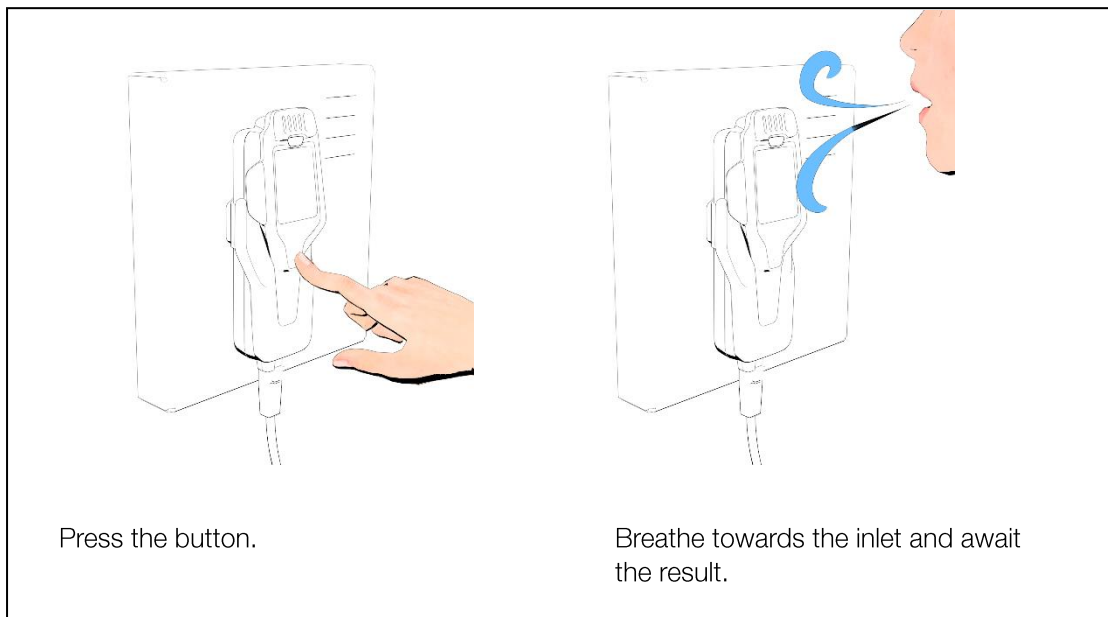
Note 4: Details on calibration and period of use is stipulated in PSP13995 chapter 5: Calibration free.

Perform a breath test

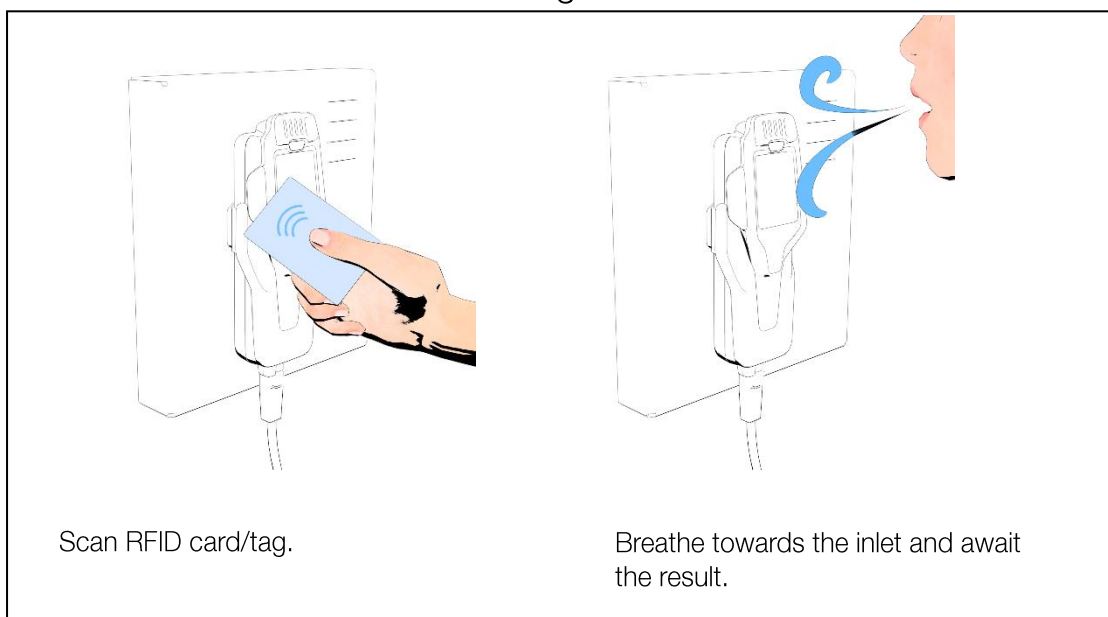
Starting test on Senseair Workplace depends on your configuration. Available ways are:

- Button
- RFID card/tag
- Input signal

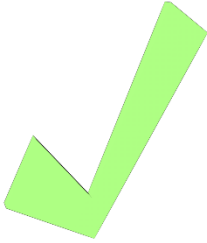

Perform a breath test – Button



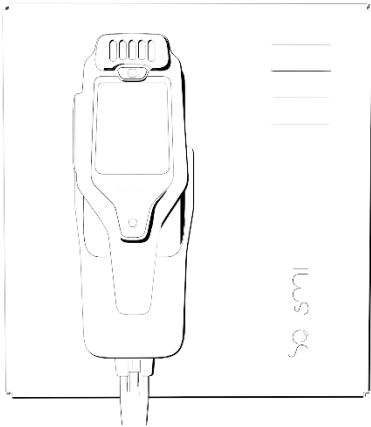
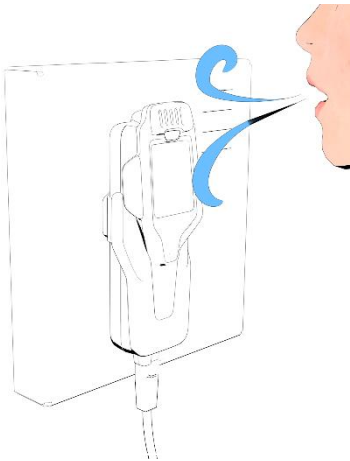
Perform a breath test – RFID card/tag



Potential results

	
Passed	Failed
Breath sample within allowed limit.	Breath sample with unacceptable level of alcohol.

Insufficient breath

	
A new breath sample is needed. Follow instructions on the display.	Make sure to direct your breath straight towards the inlet from approximately 5-10 cm and exhale until the unit emits a sound.

Precautions for use

! For reliable results, wait at least 20 minutes after ingestion of alcohol before performing a breath test.

! Tobacco, oral care products or other products containing alcohol may cause erroneous results. To prevent this, rinse your mouth with water and wait five minutes before testing.

! The time frame for the absorption and elimination of alcohol in the body varies greatly from person to person. Consequently, the alcohol level may continue to increase for up to 120 minutes after consuming alcohol.

! The device is designed to detect alcohol in human exhalation and compare the measured concentration to a certain threshold. The manufacturer of this device and the people involved in its sales do not take any responsibility for determining whether or not it is permissible to drive a vehicle or operate equipment based on the measurement results.

! Repair, disassembling, remodeling, and remanufacturing of the system may only be performed by Senseair's personnel, or service personnel trained by Senseair.

! Don't use the device without inlet filter.

! Handle device with care. Make sure that the handset cable is not pinched, torn, bent or pulled.

Maintenance

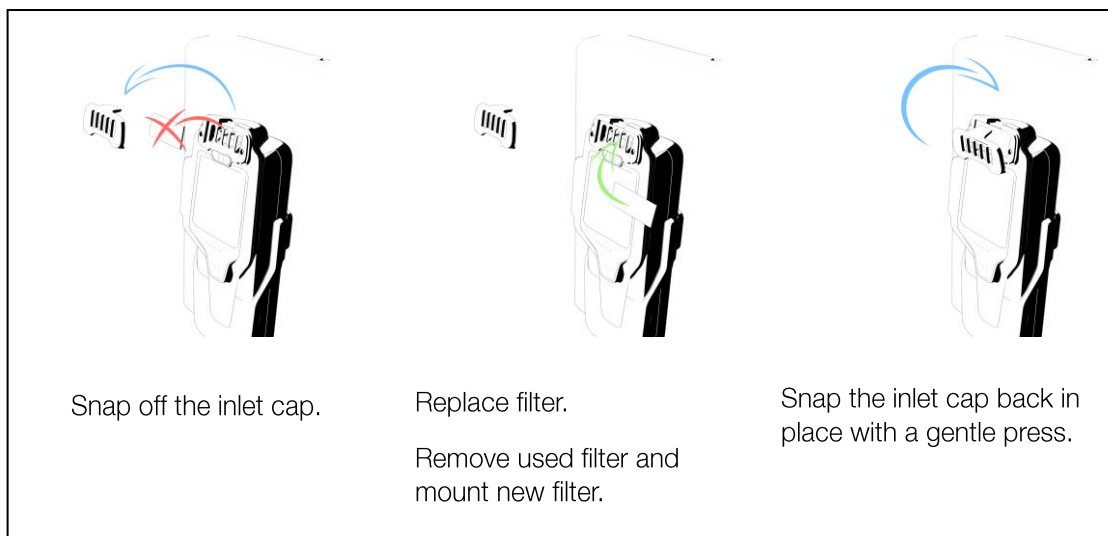
Senseair Workplace should be cleaned with a damp cloth and mild non-alcoholic detergent.

If the inlet on Senseair Workplace is exposed to dust or water, the particle filter should be replaced. In normal operation it's recommended to change the filter every 12 months. A more frequent filter change is recommended for high volume usage or in a dusty environment. In those circumstances it is recommended to change the filter monthly.

Contact Senseair or your distributor for order of particle filter, part number: 415-00001.

Filter change Procedure

! It is recommended to use gloves to remove the old filter for hygiene concerns.



Service

A service is recommended every 12 months and is performed by trained personnel. The service includes a functional test of the device to verify its accuracy.

Contact Senseair or your distributor for service.

Troubleshooting

Fault indication	Description	Reason	Suggested action
W01	Testing disabled	Sensor entered a shutdown state.	Wait for a short while. Senseair Workplace can manage to clear the fault by itself. If not cleared automatically restart Senseair Workplace. To restart the device, unplug the power cord and then plug it back in. If fault persists, contact support ¹ .
W02	Testing disabled	Inlet heaters not working properly.	Wait for a short while. Senseair Workplace can manage to clear the fault by itself. If not cleared automatically restart Senseair Workplace. To restart, unplug the power cord and then plug it back in. If fault persists, contact support ¹ .
W11	RFID error	Error in RFID module.	Restart Senseair Workplace. To restart, unplug the power cord and then plug it back in. If fault persists, contact support ¹ .
Button LED blinks 10 times then resets	Software error	Unexpected event caused software to freeze.	Contact support ¹ if fault repeats.
Display freezes and device eventually resets	Software error	Unexpected event caused software to freeze.	Contact support ¹ if fault repeats.
No power	Input voltage below 100V or above 240V results in device not working	Fluctuation on power supply voltage.	Unplug the power cord and plug it back. Make sure to connect the device to power source voltage between 100V to 240V.
Error	Invalid configuration	The configuration is not correct.	Generate a new reconfiguration file from the Senseair Alcohol Screener Configurator. Do NOT edit the file manually!

Note 1: support@senseair.com or your distributor.

Related documents

Product specification and installation manual are found at www.senseair.com (search: Senseair Workplace). User manual for Senseair Alcohol Screener Configurator is also available there.

IMPORTANT NOTICE

1. Senseair reserves the right to make changes to the information contained in this document without notice. When you consider any use or application of Senseair product stipulated in this document ("Product"), please make inquiries the sales office of Senseair or authorised distributors as to current status of the Products.
2. All information included in this document are provided only to illustrate the operation and application examples of Senseair Products. Senseair neither makes warranties or representations with respect to the accuracy or completeness of the information contained in this document nor grants any license to any intellectual property rights or any other rights of Senseair or any third party with respect to the information in this document. You are fully responsible for use of such information contained in this document in your product design or applications. Senseair ASSUMES NO LIABILITY FOR ANY LOSSES INCURRED BY YOU OR THIRD PARTIES ARISING FROM THE USE OF SUCH INFORMATION IN YOUR PRODUCT DESIGN OR APPLICATIONS.
3. The Product is neither intended nor warranted for use in equipment or systems that require extraordinarily high levels of quality and/or reliability and/or a malfunction or failure of which may cause loss of human life, bodily injury, serious property damage or serious public impact, including but not limited to, equipment used in nuclear facilities, equipment used in the aerospace industry, medical equipment, equipment used for automobiles, trains, ships and other transportation, traffic signaling equipment, equipment used to control combustions or explosions, safety devices, elevators and escalators, devices related to electric power, and equipment used in finance-related fields. Do not use Product for the above use unless specifically agreed by Senseair in writing.
4. Though Senseair works continually to improve the Product's quality and reliability, you are responsible for complying with safety standards and for providing adequate designs and safeguards for your hardware, software and systems which minimise risk and avoid situations in which a malfunction or failure of the Product could cause loss of human life, bodily injury or damage to property, including data loss or corruption.
5. Do not use or otherwise make available the Product or related technology or any information contained in this document for any military purposes, including without limitation, for the design, development, use, stockpiling or manufacturing of nuclear, chemical, or biological weapons or missile technology products (mass destruction weapons). When exporting the Products or related technology or any information contained in this document, you should comply with the applicable export control laws and regulations and follow the procedures required by such laws and regulations. The Products and related technology may not be used for or incorporated into any products or systems whose manufacture, use, or sale is prohibited under any applicable domestic or foreign laws or regulations.
6. Please contact Senseair sales representative for details as to environmental matters such as the RoHS compatibility of the Product. Please use the Product in compliance with all applicable laws and regulations that regulate the inclusion or use of controlled substances, including without limitation, the EU RoHS Directive. Senseair assumes no liability for damages or losses occurring as a result of noncompliance with applicable laws and regulations.
7. Resale of the Product with provisions different from the statement and/or technical features set forth in this document shall immediately void any warranty granted by Senseair for the Product and shall not create or extend in any manner whatsoever, any liability of Senseair.
8. This document may not be reproduced or duplicated, in any form, in whole or in part, without prior written consent of Senseair.