



3

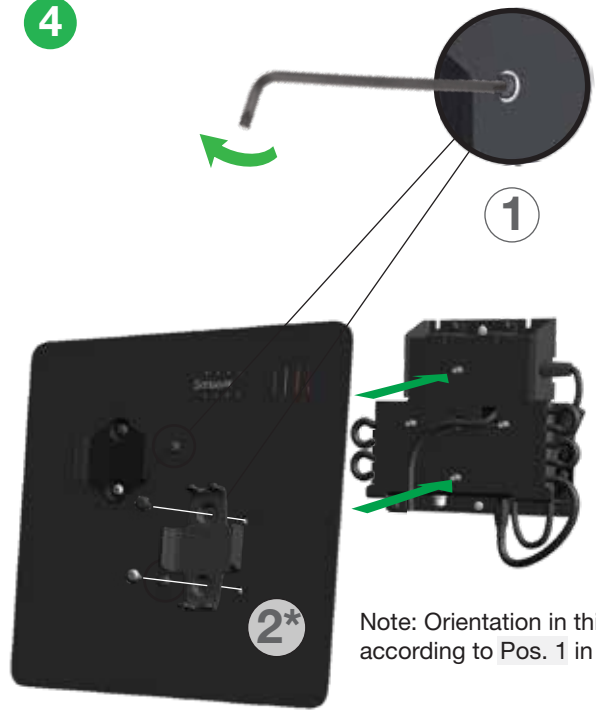


Make sure to turn the USB cable for the RFID reader the correct way \*

Ethernet cable: part No. 115-00029  
RFID reader: part No. 820-00045 \*

\*Only for option with external RFID reader

4



Note: Orientation in this example according to Pos. 1 in step 1



Do not pinch cables during installation

\*Only for option with external RFID reader

5



Connect to grounded outlet power source  
Keep transmitting electronic devices, e.g. mobile phones away from the system, in order to minimise interference

\*Only for option with external RFID reader



Visit [senseair.com](http://senseair.com) or use the QR code above for more product documentation.



Senseair AB (headquarter)  
Stationsgatan 12, Box 96, 824 08 Delsbo, Sweden  
Phone: +46-(0)653 – 71 77 70  
[www.senseair.com](http://www.senseair.com)

©2026 Senseair AB. All rights reserved.