

User Manual

Senseair Go

Public transportation adapter interlock



General

Senseair Go interlock system, is comprised of a hand unit containing a RFID reader for identification of the user, an alcohol sensor based on NDIR-technique and an access box connected to internet.

The hand unit provides visual and acoustic guidance for ease of use and to ensure the quality of the exhale test. The alcohol exhale test is performed without physical contact with the hand unit, i.e. no mouth piece is needed.

The system Safe Start also contains Senseair Wall and Senseair Dashboard which are described in separate user guides.

NOTE!

The behaviour of Senseair Go can be configured in Senseair Safe Start in a variety of ways. Please contact Senseair for further information.




Table of contents

- General1
- Safety Instructions2
- Senseair Go main parts2
- Performing an exhalation test3
 - Five step-by-step scenarios:3
 - Start of vehicle, exhalation test with approved result.....4
 - Change of vehicle within the period of validity5
 - Insufficient sample amount (exhaled air) to be able to show a result from the exhalation test ...6
 - Alcohol detected in exhalation test.....6
 - Not registered card7
- Service7
- Maintenance7
- Safety precautions8

Safety Instructions

NOTE!
 Follow the instructions given in this User manual.
 All use of the sensor requires full understanding and respect of the instructions. The sensor is only intended for use specified in this manual.

 The symbol indicates a hazardous situation which, if not avoided, could result in personal injury or damage to the instrument. It can also be used to warn of improper uses.

Senseair Go main parts



Figure 1 Access box, RFID reader and Hand unit

Performing an exhalation test



For reliable results, wait at least 20 minutes after ingestion of alcohol - or smoking - before performing an exhalation test.

The time frame for the absorption and elimination of alcohol in the body varies greatly. The blood alcohol level may continue to increase for 60-120 minutes after last consumed alcohol.

When eating candy containing alcohol, using mouth wash containing alcohol or drinking low alcohol beverages there will be an instant increase of alcohol levels in the mouth. The risk for a false positive result due to the mouth alcohol effect increases. Therefore, rinse the mouth with water or wait 20 minutes to clear the mouth of alcohol residue.

Five step-by-step scenarios:

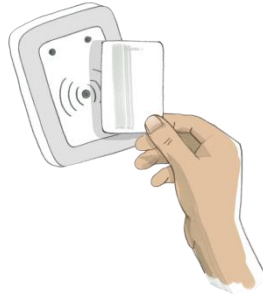
- Start of vehicle, exhalation test with approved result
- Change of vehicle within the period of validity
- Insufficient sample amount (exhaled air) to be able to show a result from the exhalation test
- Alcohol detected in exhalation test
- Not registered ID card

Start of vehicle, exhalation test with approved result



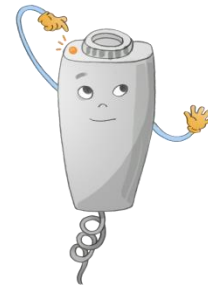
1. THE VEHICLE IS LOCKED

The driver who has finished his/her work shift has locked the vehicle by scanning his/her ID card.



2. IDENTIFY YOURSELF

Identify yourself on the vehicle by holding up your card against the RFID reader.



3. WAIT

Wait a few seconds for the sensor to start up and the two green arrows to light up.



4. EXHALE

Exhale when the two green arrows are lit.



5. RESULT

Green lamp shines when the result is approved.



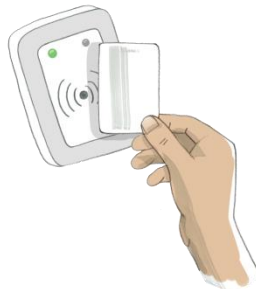
6. THE VEHICLE IS UNLOCKED

The vehicle is unlocked when you exhale approved result.



7. PERIOD OF VALIDITY

Approved exhalation test lasts for 3 hours.¹



8. LOCK THE VEHICLE

Scan your ID card again, if you want to lock the vehicle.



9. THE VEHICLE IS LOCKED

The 2nd time you scan your card, the vehicle get locked again.

Not 1: configurable



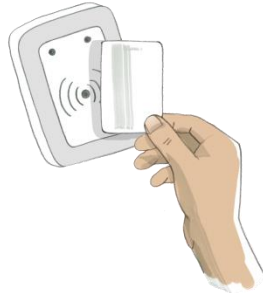
An Asahi Kasei Group Company.

Change of vehicle within the period of validity



1 THE VEHICLE IS LOCKED

The driver who has finished his/her work shift has locked the vehicle by scanning his/her ID card.



2 IDENTIFY YOURSELF

Identify yourself on the vehicle by holding up your card against the RFID reader.



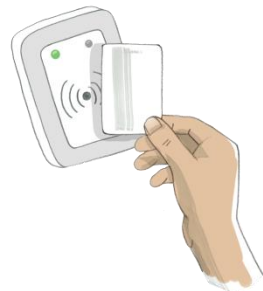
3 THE VEHICLE GETS UNLOCKED WITHOUT NEW EXHALATION TEST

Thanks to the fact that you are within the period of validity you do not have to make another exhalation test. The vehicle will be unlocked when you have identified yourself. ¹



4 THE SENSOR DOES NOT WAKE UP

The orange lamp flashes at a slow speed: When you are within the period of validity no new exhalation test requires.



5 LOCK THE VEHICLE

Scan your card once again if you want to lock the vehicle.

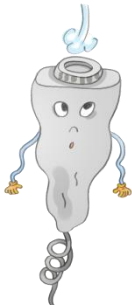


6 THE VEHICLE IS LOCKED

The 2nd time you scan your card, the vehicle get locked again.

Note 1: The period of validity applies from approved exhalation test at Senseair Go or Senseair Wall in your Safe Start-fleet.

Insufficient sample amount (exhaled air) to be able to show a result from the exhalation test



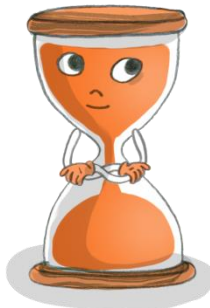
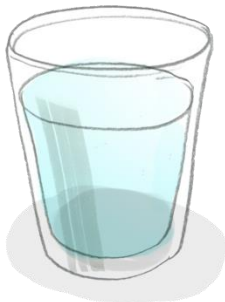
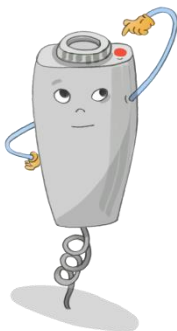
1 INSUFFICIENT EXHALATION

2 EXHALE AGAIN

The orange lamp flashes in a couple of seconds and then the two green arrows are lit again: The unit can not show a result. This will NOT give a signal to the traffic management! Repeat exhalation test.

You may need to be closer to the unit when exhaling.

Alcohol detected in exhalation test



1 IF ALCOHOL IS DETECTED

2 RINSE YOUR MOUTH

3 WAIT FOR 5 MINUTES

Red lamp lits: the unit detects alcohol in your exhalation. An e-mail will be sent to the traffic management that this has happened. ¹

Alcohol in your exhalation may be due to e.g. the use of certain mouthwashes. Please rinse your mouth thoroughly with water.

Wait 5 minutes to ensure that oral alcohol from e.g. mouthwash disappears. ²

Not 1 and 2: configurable

Not registered card



4 UNKNOWN CARD

3 fast beeps: ID card is not registered.
Register the card in the system.

Service


Repair and service of the system may only be performed by Senseair personnel, or service personnel trained by Senseair.

Service has to be done once a year. The unit has to be sent back to Senseair for function tests.

Maintenance

Preventive maintenance regarding function shall be performed by the manufacturer autorised service provider.

If the inlet of Senseair Go is exposed to dust or water, the particle filter should be replaced.
Senseair Go should be cleaned with a damp cloth and a non-alcoholic cleaner.

Test	Unit	Activity	Interval	Expected result
Funktionstest kommunikation	Access box & hand unit	Perform exhalation test with a sober test person.	12 months	UNLOCK
Funktionstest kommunikation	Access box & hand unit	Perform a NON-sober exhalation test by placing a marker pen containing ethanol in front of the inlet of the hand unit, then exhale towards it.	12 months	LOCK
Visuell inspektion partikelfilter	Hand unit	Change of particle filter 3EST000230-8334  <ol style="list-style-type: none"> 1. Turn the lid cap CCW 2. Change the particle filter 3. Turn the lid cap back CW until the "click" 	12 months or 1000 exhalation tests	

Senseair

An Asahi Kasei Group Company.

Document
UMA11258

Rev
1

Page
7 (8)

Safety precautions

- Do not open the hand unit as it contains sensitive components. The warranty expires if the unit is opened.
- Avoid placing the unit in direct sunlight for extended periods of time.
- Avoid exposing the hand unit to moisture. If liquid has been spilled on the unit, let it dry before use.
- Do not switch on the unit if liquid has leaked into the inlet. Contact Senseair AB.
- Minimise interference by keeping electronic transmitters such as mobile phones, away from the system.
- Do not connect the Hand unit or Access box to any electrical instruments without consulting Senseair AB.

This product uses the FreeRTOS operating system. For more information see www.FreeRTOS.org. The source code of FreeRTOS can be provided via info@senseair.com.

www.senseair.com

©2019 Senseair AB. All rights reserved.



An Asahi Kasei Group Company.

Document	Rev	Page
UMA11258	1	8 (8)