

User Manual

Senseair Wall

Alcohol sensor



General

Senseair Wall for wall mounting, analyzes the exhaled air to determine the concentration of alcohol. The exhaled test is performed without physical contact with Senseair Wall, therefore, no mouthpiece is required. The recommended distance from the inlet is approximately 3 cm. An infrared optical sensor measures the alcohol concentration. Relay functionality to control an external electrical lock is available as an option. Individuals identify themselves using an RFID card.

Senseair Wall is included in the system Senseair Safe Start, which includes a web-based interface, its status with statistics and overview of installed devices and users. Alarm functions are programmable and can be sent via email to preset individuals.

NOTE!

The behaviour of Senseair Wall can be configured in Senseair Safe Start in a variety of ways. Please contact Senseair for further information.



Table of Contents

General.....	1
Safety Instructions.....	3
Senseair Wall Parts.....	3
Performing an Exhaled Test.....	4
Four step by step scenarios:	4
Test with an approved result	4
Not enough test air to measure the alcohol concentration in the exhaled test	5
Alcohol detected in test No. 1 and approved test result in test No. 2.....	6
Alcohol detected in test No. 1 and in test No. 2	7
Service	8
Maintenance.....	8
Particle filter change procedure.....	8

Safety Instructions

NOTE!

Follow the User Manual.

All use of the sensor requires full understanding and respect of the instructions. The sensor is only intended for use specified in this manual.



The symbol indicates a hazardous situation which, if not avoided, could result in personal injury or damage to the instrument. It can also be used to warn of improper uses.

Senseair Wall Parts

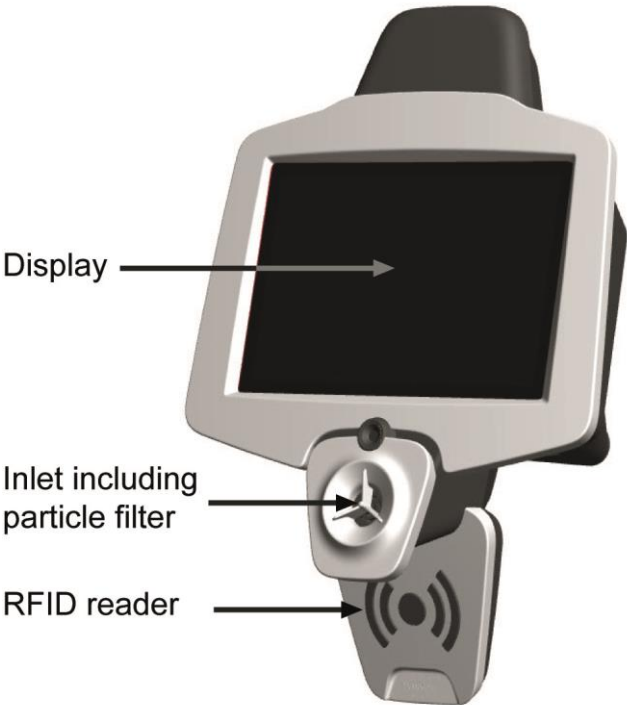


Figure 1

Performing an Exhaled Test



For reliable results, wait at least 20 minutes after ingestion of alcohol - or smoking - before performing an exhaled test.



The time frame for the absorption and elimination of alcohol in the body varies greatly, which means that the blood alcohol level may continue to increase for 60-120 minutes after you last consumed alcohol.

Four step by step scenarios:

- Test with an approved result
- Not enough test air to measure the alcohol concentration in the exhaled air
- Alcohol detected in test No. 1 and an approved test result in test No. 2
- Alcohol detected in test No. 1 and in test No. 2

Test with an approved result



1. START

Identify yourself by placing the RFID card at the bottom of the unit.



2. PLEASE WAIT

Wait for a short while until the unit instructs you to breath.



3. EXHALE

Exhale towards the inlet of the unit.



4. RESULT

The result is presented discretely on the screen.

Figure 2

Not enough test air to measure the alcohol concentration in the exhaled test



Figure 3

Note 1: Configurable

Alcohol detected in test No. 1 and approved test result in test No. 2



Figure 4

Note 1 and 2: Configurable

Alcohol detected in test No. 1 and in test No. 2



Figure 5

Note 1 and 2: Configurable

Service

Repair of the system may only be performed by Sensair's personnel, or service personnel trained by Senseair.

Service in the form of functional testing is done once a year.

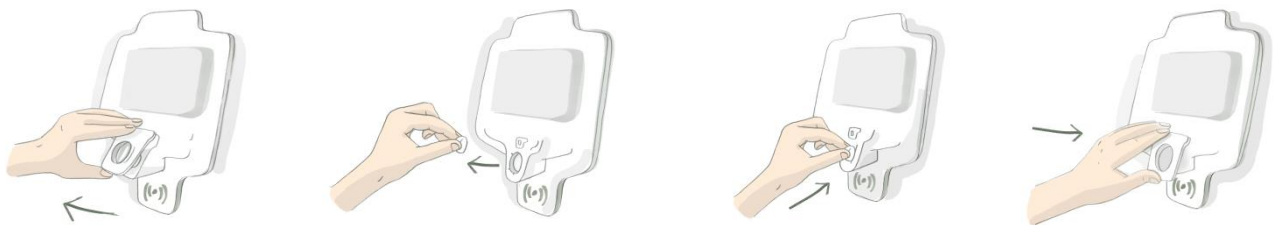
Maintenance

If the inlet on Senseair Wall is exposed to dust or water, the particle filter should be replaced.

In a normal office environment it's recommended to change the filter after 1000 exhaled tests.

Senseair Wall should be cleaned with a damp cloth and mild detergent.

Particle filter change procedure



1. Remove inlet cap

2. Remove used filter

3. Mount new filter

4. Mount inlet cap

Figure 6

www.senseair.com