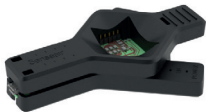




Senseair

Installation manual
Sunrise & Sunlight
evaluation kit



x1



x1



NOTE:
ESD sensitive product.
Use ESD protection equipment.

1

a



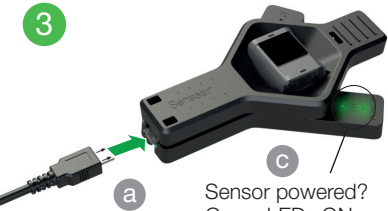
b



2



3



Sensor powered?
Green LEDs ON



Connect to computer

4

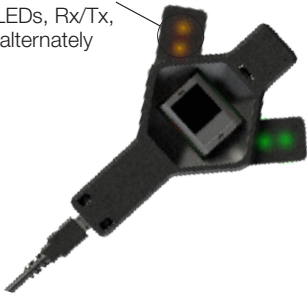
Download software &
USB Com Cable Driver:



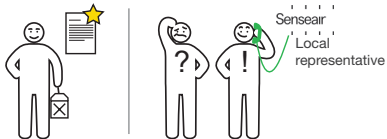
[https://senseair.com/product/
sunrise-sunlight-evaluation-kit/](https://senseair.com/product/sunrise-sunlight-evaluation-kit/)

5

Sensor connected?
Yellow LEDs, Rx/Tx,
flashes alternately



IMA8637 Rev 5





Senseair AB (headquarter)
www.senseair.com

| | | |
Senseair
| | | |