

Installation manual

# Senseair ExploraCO<sub>2</sub>

LoRaWAN, battery powered

CO<sub>2</sub>, temperature and relative humidity sensor

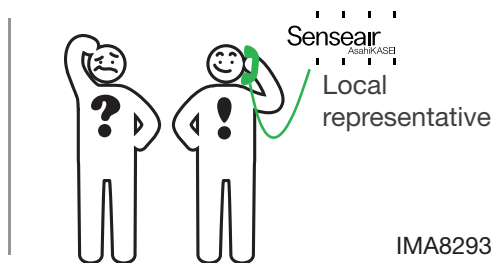
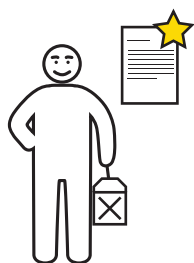


x1

x2



NOTE:  
ESD-sensitive product.  
Use ESD protection equipment.

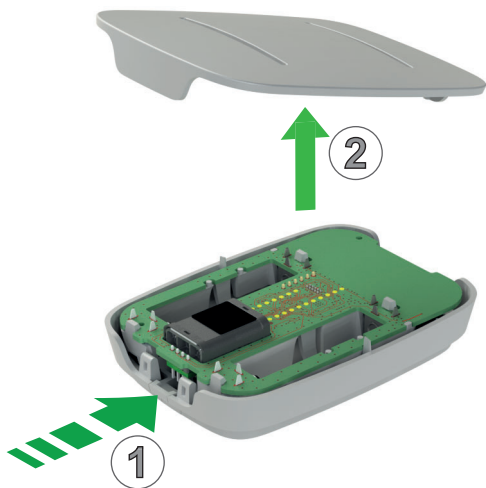


IMA8293  
Rev 2

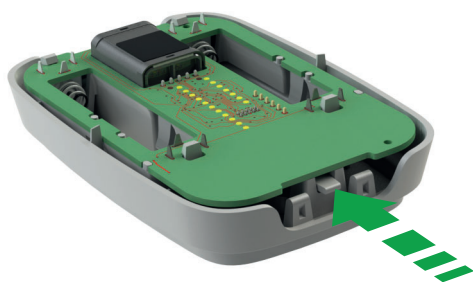


Senseair  
AsahiKASEI

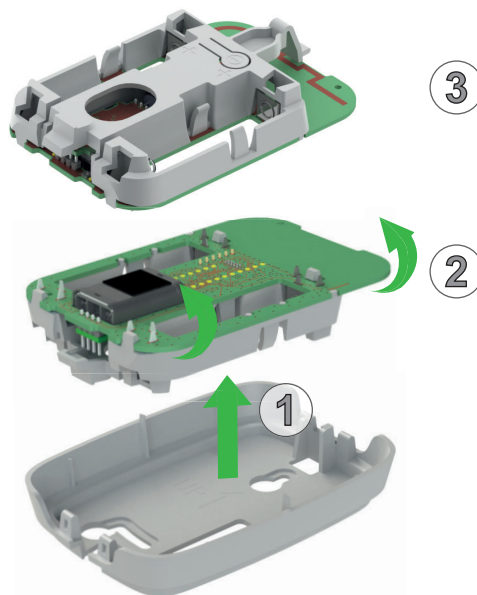
1



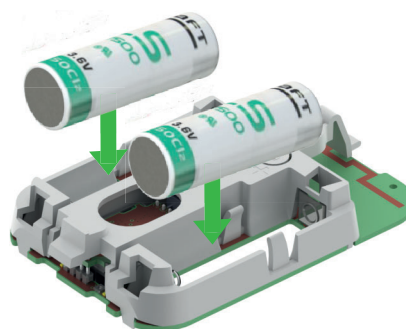
2

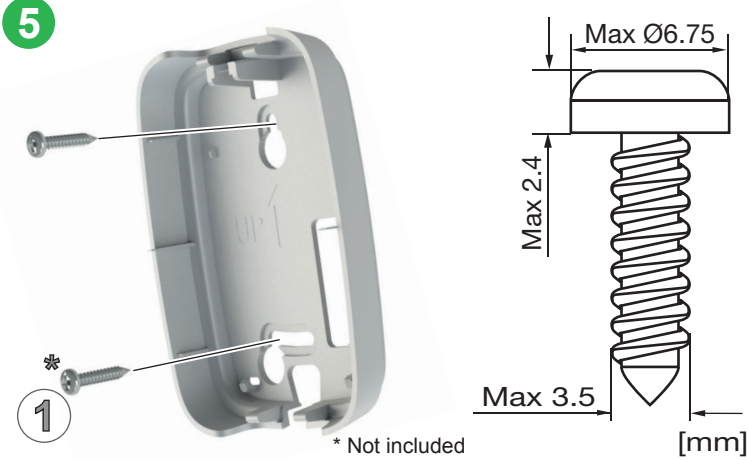


3

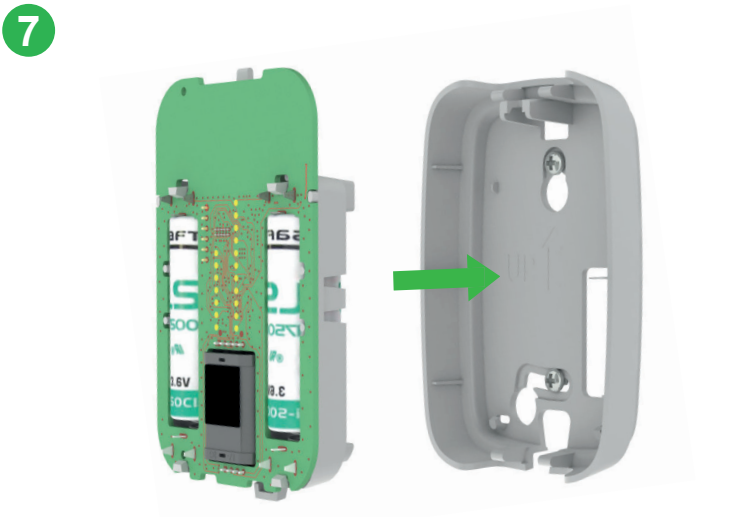
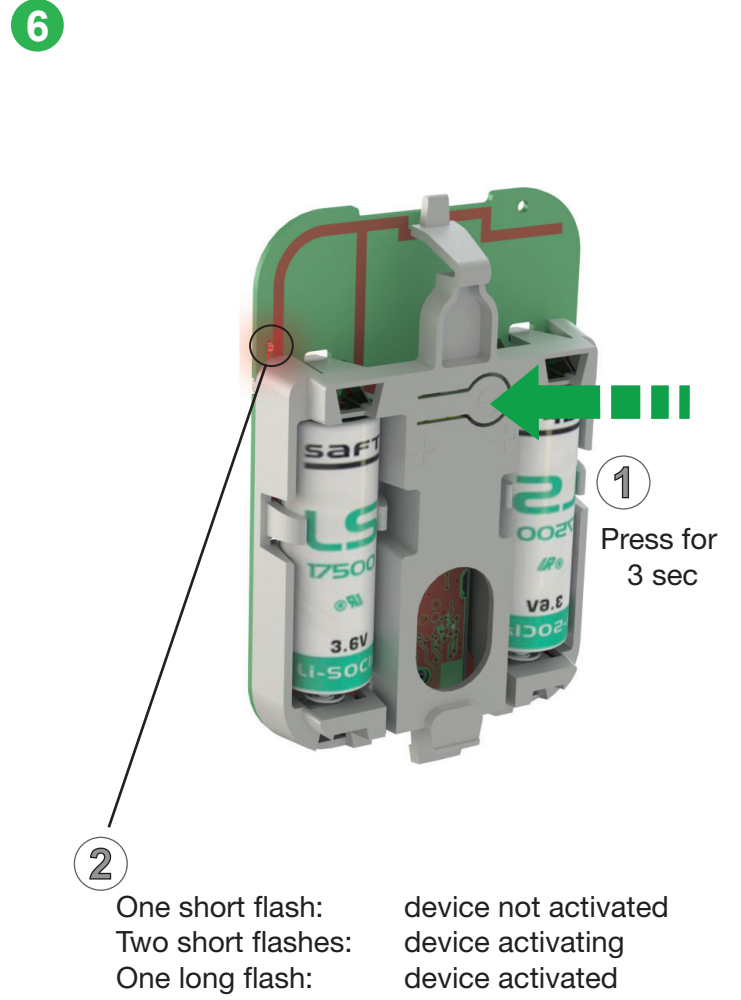


4





**!** NOTE:  
Use manual screwdriver to avoid damages on plastic cover.



Senseair AB (headquarter)  
Stationsgatan 12, Box 96, 824 08 Delsbo, Sweden  
Phone: +46-(0)653 – 71 77 70  
www.senseair.com